



TAMAR SEAL™

Innovative sealing technology

TAMAR SEAL 740-PC FOR PC PUMP



12 MONTHS WARRANTY



Paint industry



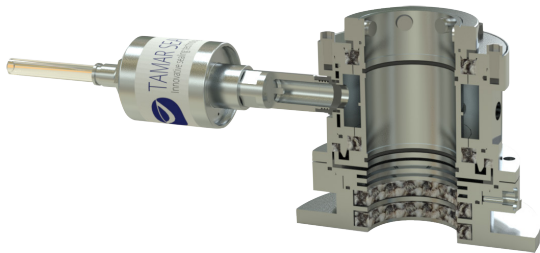
glue industry



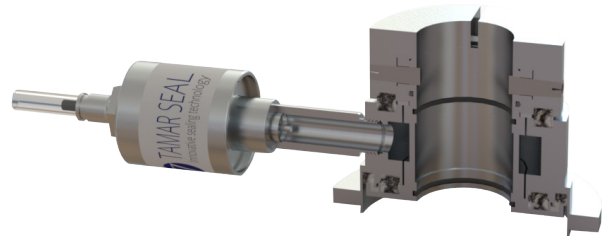
chemical industry

HEAVY DUTY SEAL

SEAL OPTIONS



Internal seal cartridge for packing replacement



External seal cartridge for mechanical seal replacement

Success Story

The challenge:

- An old "Allweiler" PC pump
- An abrasive and problematic flowing material
- Low suction pressure
- After many unsuccessful mechanical seal trials, the customer uses packing

Operational Parameters:

- Flowing material: wall paint
- Working temperature: 30°C (86°F)
- Shaft dia: 55mm (2.16")
- Speed: 600rpm
- Suction pressure: 1 bar (14 psi)



The result



The Tamar seal has managed to extend the pump life, reduce downtime and save the cost of finished wall paint that used to leak through the packing.

PARAMETERS

- Max. S.box pressure _____ 1 bar (15 psi)
- Max. shaft speed _____ 2 m/s (6.6 f/s)
- PH _____ 0-14
- Max Temperture _____ 130°C (260°F)
- Max radial runout _____ 0.5mm (0.004")

Consult Tamar for parameters that exceed the range above

Features

MTZ 740-PC provides solution for **progressive cavity pumps** such as Mono, Moyno and Seepex. The air flushed MTZ 740PC can handle extream applications, and provides 3-4 weeks notification before maintanance.

- Can be serviced while the equipment is running- no downtime
- Acts as a third bearing to support the shaft and reduce run-outs
- Average life before servicing - 2 years

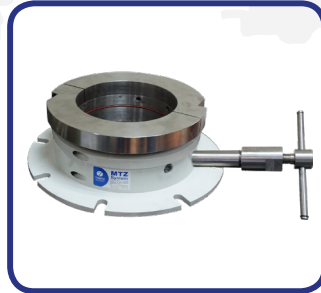


Patent No: 8,215,643 B2

TAMAR SEAL RANGE



410-SF Screw Conveyors



420-VD Vacuum dryers



430-RV Rotary valves



440-PM Packing machines



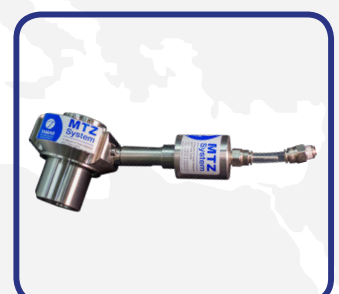
450-SP Screw pumps



510-RM Ribbon mixer



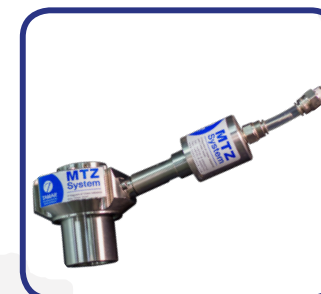
610-AG Agitators



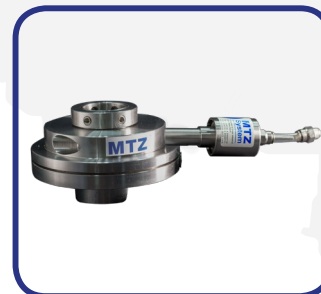
620-BL Blowers



710-SP Slurry pumps



720-PP Process pumps



730-TP Turbine pumps



740-PC Progressive cavity pumps

Your local TAMAR distributor:

www.tamar-tech.com