



MTZ sealing system-Pump seal data sheet

CUSTOMER INFORMATION

Company: _____ Contact: _____ Email: _____
Plant: _____ Phone No: _____ Fax No: _____

EQUIPMENT INFORMATION

Manufacturer: _____ Model: _____ Type: _____ Serial: _____
Case split: Horiz _____ Solid _____ Vertical _____ Speed(rpm): _____
Can the sleeve be: eliminated _____ shortened _____
Operation: Intermittent _____ Continuous _____
Wetted parts made of: _____

PRODUCT INFORMATION

Product to be sealed: _____ Temperature (°C): _____ P.H: _____
Pressures – Suction: _____ Is MSDS available? YES / NO
Discharge: _____ Food approved: YES / NO
Stuffing box: _____ Max radial misalignment (mm): _____

FLUID CHARACTERISTICS

% Solids present: _____ Does it set up or harden? YES / NO
Does fluid crystallize? YES / NO Is it corrosive? YES / NO Is it abrasive? YES / NO

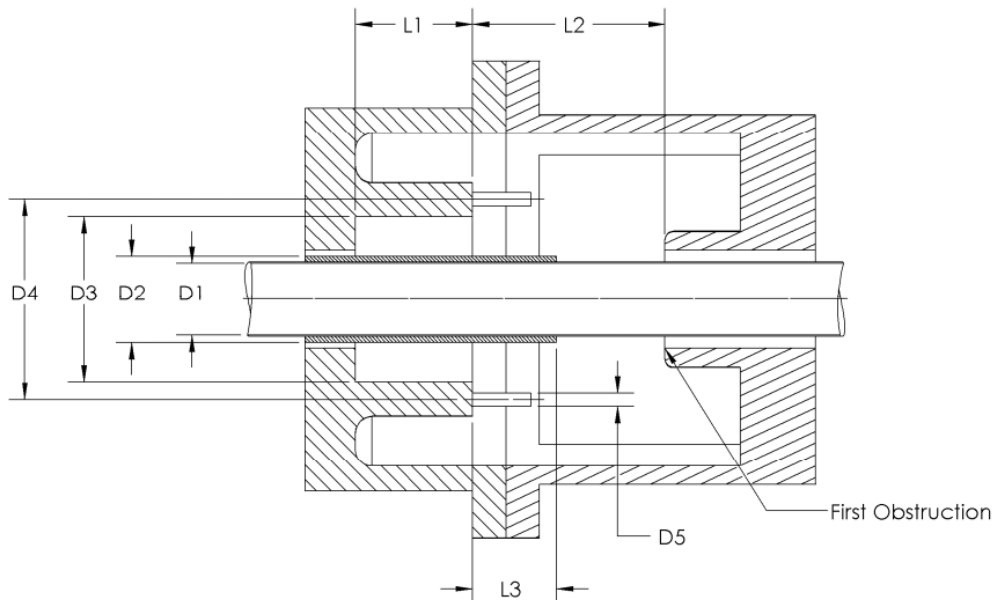
ENVIRONMENTAL CONTROLS

Controls available
Clean flush barrier fluid: _____ Cooling water - temperature: _____
Pressure of flush liquid: _____ Cooling water - Flow rate: _____
Quench fluid pressure: _____ Discharge or suction By-pass: _____
Recommended O-Ring: _____

MTZ sealing system-Pump seal data sheet

General dimensions:

D1* Shaft size: _____(mm) L1 Depth: _____(mm)
D2 Sleeve size: _____(mm) L2 Distance to first obstruction:
D3 Bore: _____(mm) _____(mm)
D4 Stud dia circle: _____(mm) L3 Sleeve length outside stuffing
D5 Stud size: _____(mm) box: _____(mm)
Studs QTY. : _____



*** If - D1 changes in L1 area - please contact our engineering team.**
**** Please include an updated drawing of the sealed section And a picture of the seal area.**

Date: __/__/__

Signature: _____

Thank you.
TAMAR-TECH, Engineering Team
Fax: (+972)86900711
Tel: (+972)86900710