

Tamar seal 510-RM

Sludge application

Features

MTZ 510-RM provides a solution for wet or dry process ribbon mixers.

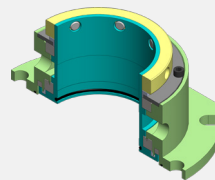
The MTZ 510RM can handle any process and provides 3-4 weeks notification before maintenance.

- Optional Split cartridge type - simple and easy installation
- Can be serviced while the equipment is running, no downtime
- Simple to install and maintain
- Average life before servicing -2 years

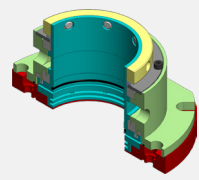
Parameters

- Max. sealing pressure _____ vacuum to 1 bar (15 psi)
- Max. shaft speed _____ 3 m/s (10 f/s)
- PH _____ 0-14
- Max . Temperture _____ 120°C (248 °F)
- Max radial runout _____ 0.5mm (0.02")

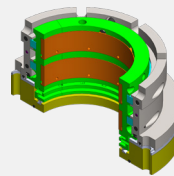
Seal options



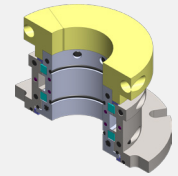
Standard dimensions for typical applications



Air flushed seal for high pressure applications



Unique 'floating seal' design for high run-out applications



Split seal arrangement for large shaft diameters



2 years warranty | Ribbon mixers
Paint industry

