

Tamar seal 410-SF

Powder application

Features

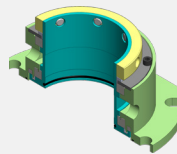
MTZ 410-SF is specially designed for **screw conveyors and feeders**. The MTZ 410SF easily fits any screw feeder designs and provides 3-4 weeks notification before maintenance.

- Optional - Split cartridge type - for simple and easy installation
- Can be serviced while the equipment is running, no downtime.
- Acts as a third bearing to support the shaft and reduces run outs.
- Average life before servicing - 2 years

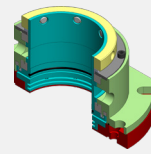
Parameters

- Max. sealing pressure _____ 0.5 bar (7 psi)
- Max. shaft speed _____ 3 m/s (10 f/s)
- PH _____ 0-14
- Max Temperature _____ 200°C (392 °F)
- Max radial runout _____ 0.5mm (0.02")

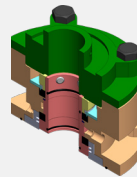
Seal options



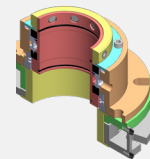
Standard dimensions for typical applications/split cartridge



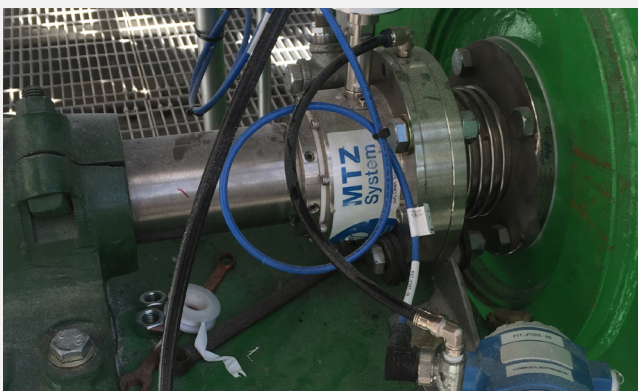
Air flushed seal for high pressure applications



Bearing supported for custom designed applications



Flexible joint integrated for high shaft run-out



2 years warranty | Screw conveyors
Food plant

