



Reliable

Smart

Simple

SUCCESS STORY

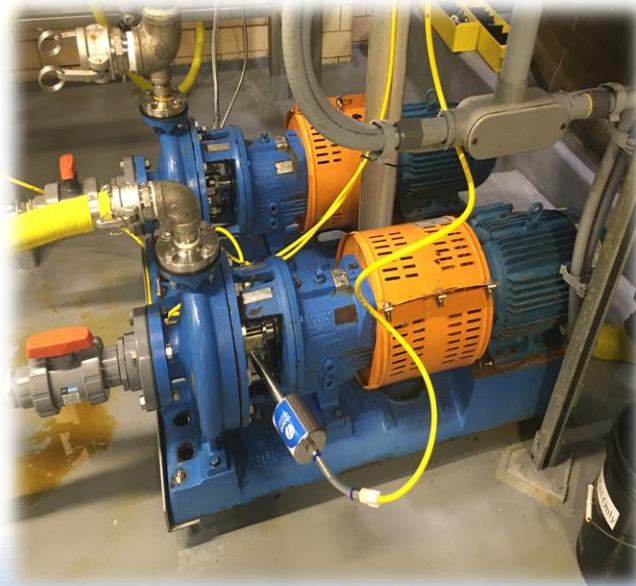
TAMAR 720-PP seal

Food application, Goulds MTX pump



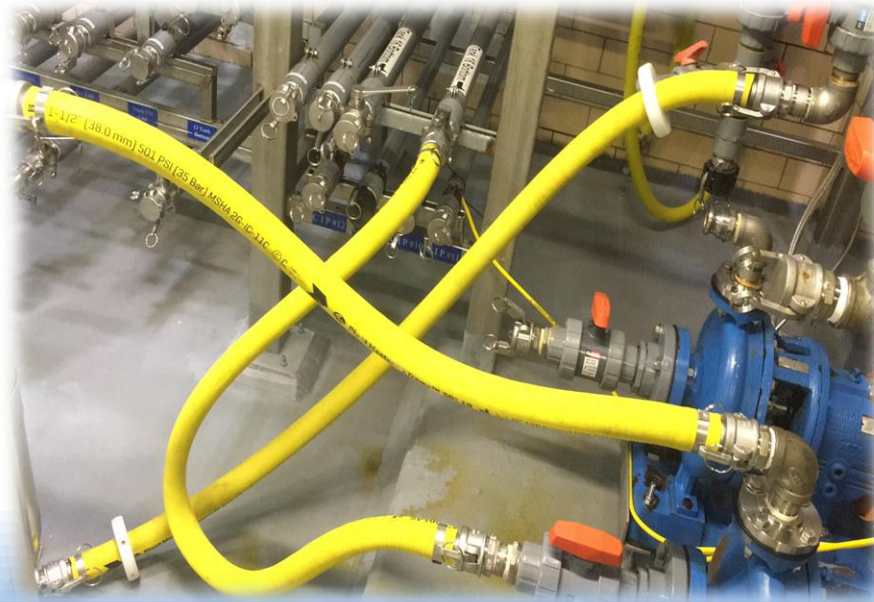
APPLICATION AND PROBLEM

- Plant brings in raw bulk liquid material to be processed in the plant
- Product is contained in several outside holding tanks, fed to two ANSI 3196MTX pumps
- Pumps feed product first through 5 micron filters to remove solids
- Product then fed to cooking vessels in the plant



ISSUE:

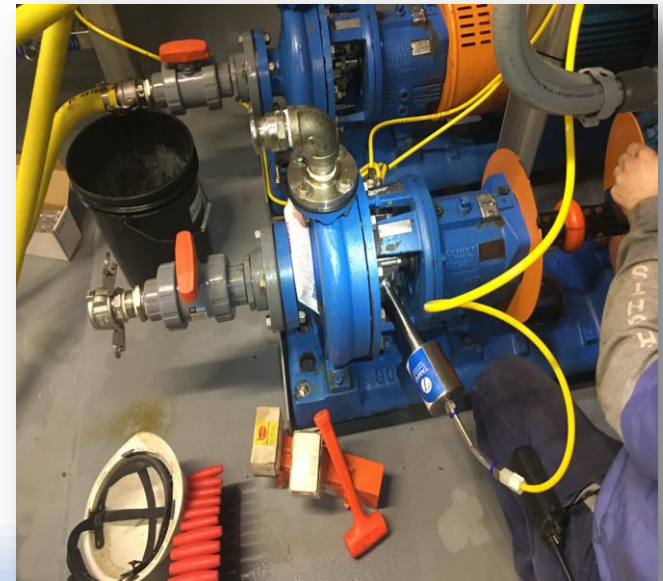
- Pumps utilize double mechanical seals with plan 53b
- Due to how the pumps are piped, applied, and used continual **seal failure from cavitation etc.**
- Improper feed lines, poor NPSH, Filter in discharge line, resulting in **clogging, dead heading** the pump
- Pretty much **what not to do to pump is being done**



Solution:

Installation of a TAMAR air seal

- ✓ No faces to damage
- ✓ Can dry run, does not care about cavitation
- ✓ In the advent of a dead head condition seal may have small leak, but can be corrected while running.



Result:

- ✓ Zero leakage, 6 lpm of air consumption
- ✓ Not registering air flush pressure due to box pulling vacuum
- ✓ Typically set at 10-15 psi over box pressure



Pump/seal running smooth and leak free

Join the success!



www.tamar-tech.com