

# Tamar seal 440-PM

## Powder application

### Features

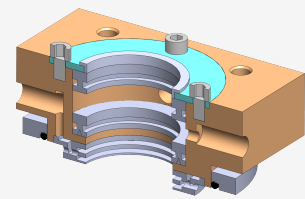
**MTZ 440-PM** provides a solution for batch weighing **packing machines**. The air flushed MTZ 440PM can handle extrem applications and provides 3-4 weeks notification before maintenance.

- Can be serviced while the equipment is running, no downtime
- Simple to install and maintain
- Average life before servicing -1 year

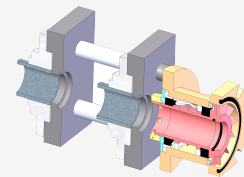
### Parameters

- Max. sealing pressure \_\_\_\_\_ 2 bar (29 psi)
- Max. shaft speed \_\_\_\_\_ 5 m/s (16.5 f/s)
- PH \_\_\_\_\_ 0-14
- Max . Temperture \_\_\_\_\_ 80°C (176 °F)
- Max radial runout \_\_\_\_\_ 0.5mm (0.02")

### Seal options



Standard design for tight space applications



Bearing supported for custom designed applications



Packing machines | Chemical plant

