

Tamar seal 720-PP

Pump application

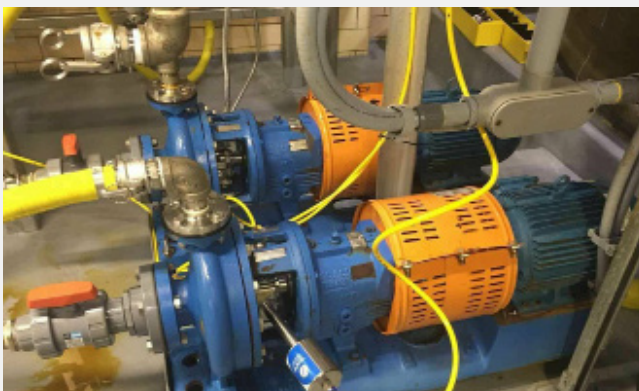
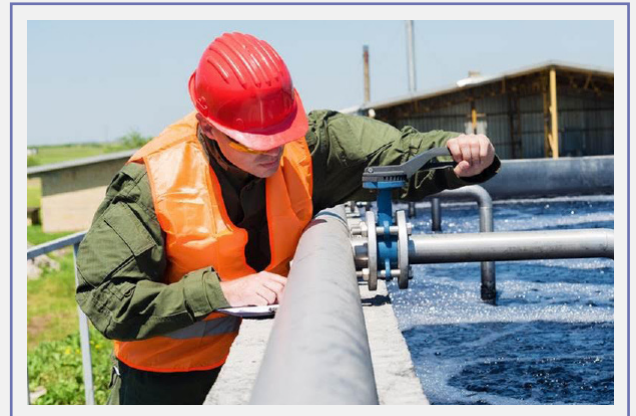
Features

MTZ 720-PP provides a solution for **process pumps**. The air flushed MTZ 720PP can handle extreme applications, and provides 3-4 weeks notification before maintenance.

- Standard ANSI dimensions
- Can be serviced while the equipment is running, no downtime
- Simple to install and maintain
- Withstands dry running
- Withstands thermal and hydraulic shocks
- Without fragile faces
- Average life before servicing -2 year

Parameters

- Max. sealing pressure (s.box) _____ 3 bar (43.5 psi)
- Max. shaft speed _____ 8.5 m/s (28 f/s)
- PH _____ 0-14
- Max . Temperture _____ 120°C (248 °F)
- Max radial runout _____ 0.1mm (0.004")



3 years warranty | Process pump
Mineral industry

